

maurey

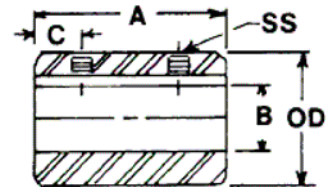
Hi-Q[®] Sleeve Couplings finished bore and bushed type

**NEW LOWER
PRICES!**



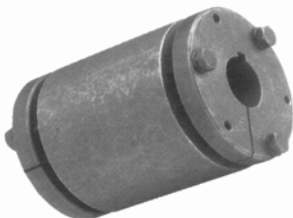
Finished Bore Sleeve Couplings

Maurey finished bore couplings are machined from bar steel, with standard keyseats and hollow head set screws.

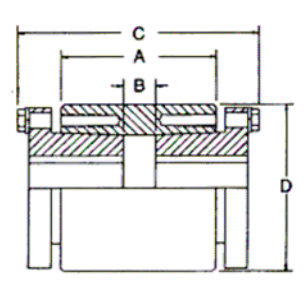


Part No.	List Price	O.D.	A	B	C	Set Screw	Weight Lbs	Keyway
SC04	\$ 4.75	1/2	3/4	1/4	3/16	8-32 x 1/8"	.06	None
SC05	\$ 5.35	5/8	1	5/16	1/4	8-32 x 1/8"	.06	None
SC06	\$ 6.20	3/4	1	3/8	1/4	10-24 x 1/8"	.1	None
SC08	\$ 9.75	1	1-1/2	1/2	3/8	1/4-20 x 1/4"	.2	1/8 x 1/16
SC10	\$ 11.60	1-1/4	2	5/8	1/2	5/16-18 x 5/16"	.5	3/16 x 3/32
SC12	\$ 14.00	1-1/2	2	3/4	1/2	5/16-18 x 3/8"	.8	3/16 x 3/32
SC14	\$ 16.40	1-3/4	2	7/8	1/2	5/16-18 x 3/8"	1.0	3/16 x 3/32
SC16	\$ 23.80	2	3	1	3/4	3/8-16 x 1/2"	1.9	1/4 x 1/8
SC18	\$ 25.75	2-1/8	3	1-1/8	3/4	3/8-16 x 1/2"	2.1	1/4 x 1/8
SC20	\$ 26.00	2-1/4	4	1-1/4	1	3/8-16 x 1/2"	3.1	1/4 x 1/8
SC22	\$ 37.00	2-1/2	4-1/2	1-3/8	1	3/8-16 x 1/2"	4.3	5/16 x 5/32

Rigid Bushed Sleeve Couplings



Bushed sleeve couplings provide a simple and economical way to join two shafts of different diameters. Made from steel, these couplings use the gripping strength of tapered bushings to eliminate the need for shrink fits.



Part Number	List Price	Bushing Size	Bore Range	Maximum Torque*	A	B	C	D	Weight Less Bushing
SCHQ	\$ 74.00	HQ	3/8" - 1-1/2"	1,700 in.lbs	2	5/16	3-9/32	2-1/2	1.63
SCSD	\$ 98.00	SD	1/2" - 2"	7,000 in.lbs	3	5/8	4-3/4	3-1/4	3.69
SCSK	\$ 125.00	SK	1/2" - 2-5/8"	7,000 in.lbs	4	1-11/16	6	4-1/4	9.00

* Maximum torque is in inch-pounds. For heavy or shock loads use one half of this torque rating.

* Torque ratings expressed here are based on bushing and coupling strength. Smaller bores and shafts may not be able to withstand these torques. Always check the shaft and keyway strengths before using.